



**REGIONAL SPECIALISED METEOROLOGICAL CENTRE-TROPICAL CYCLONES, NEW DELHI
SPECIAL TROPICAL WEATHER OUTLOOK**

DEMS-RSMC SPECIAL TROPICAL CYCLONES NEW DELHI DATED 06.12.2021

SPECIAL TROPICAL WEATHER OUTLOOK FOR NORTH INDIAN OCEAN (THE BAY OF BENGAL AND ARABIAN SEA) VALID FOR NEXT 120 HOURS ISSUED AT 0230 UTC OF 06.12.2021 BASED ON 0000UTC OF 06.12.2021.

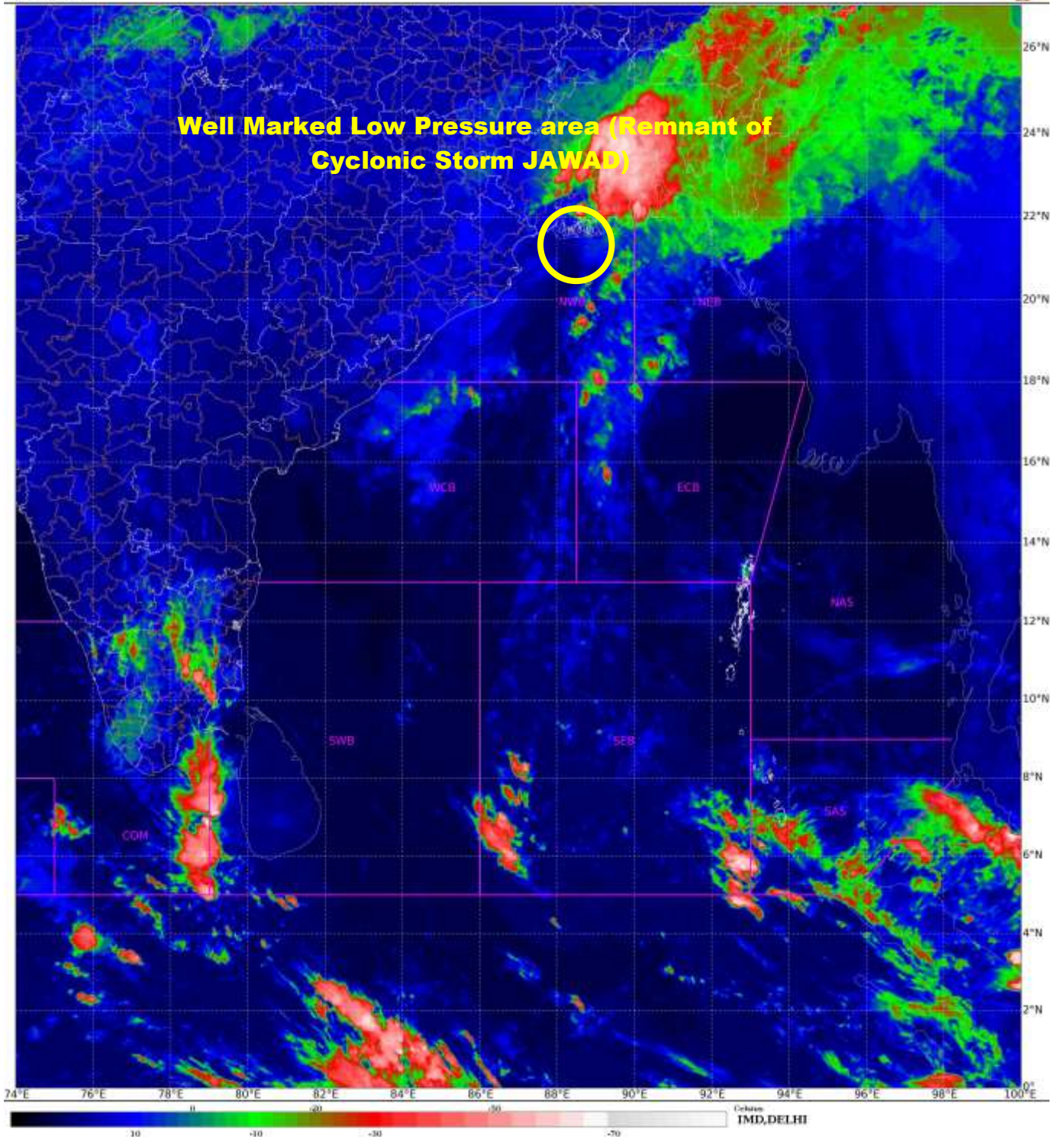
SUB: DEPRESSION (REMNANT OF CYCLONIC STORM 'JAWAD') WEAKENED INTO WELL MARKED LOW PRESSURE AREA OVER NORTHWEST BAY OF BENGAL AND ADJOINING WEST BENGAL AND BANGLADESH COASTS

THE DEPRESSION (REMNANT OF CYCLONIC STORM 'JAWAD') OVER NORTHWEST BAY OF BENGAL NEAR NORTH ODISHA COAST MOVED NORTHEASTWARDS AND WEAKENED INTO WELL MARKED LOW PRESSURE AREA OVER NORTHWEST BAY OF BENGAL AND ADJOINING WEST BENGAL AND BANGLADESH COASTS AT 0000 UTC OF TODAY, THE 06TH DECEMBER 2021. IT IS LIKELY TO MOVE NORTHEASTWARDS AND WEAKEN FURTHER INTO A LOW PRESSURE AREA DURING NEXT 06 HOURS.

AS PER SATELLITE IMAGERY BASED ON 0000 UTC OF 6TH DEC, ASSOCIATED BROKEN LOW/MEDIUM CLOUDS WITH EMBEDDED INTENSE TO VERY INTENSE CONVECTION OVER GANGETIC WEST BENGAL ADJOINING SOUTHWEST BANGLADESH MINIMUM CTT MINUS 75.

THIS IS THE LAST BULLETIN PERTAINING TO THIS SYSTEM. HOWEVER, REGULAR BULLETIN WILL BE CONTINUED FROM RSMC.

**(R. K. Jenamani)
Scientist-F, RSMC, New Delhi**





OBSERVED TRACK OF CYCLONIC STORM 'JAWAD' OVER BAY OF BENGAL DURING 02nd DECEMBER - 5th DECEMBER, 2021



DATE/TIME IN UTC

IST=UTC + 0530

L: LOW PRESSURE AREA

WML: WELL MARKED LOW PRESSURE AREA

D: DEPRESSION (17-27 KT)

DD: DEEP DEPRESSION (28-33 KT)

CS: CYCLONIC STORM (34-47 KT)

SCS: SEVERE CYCLONIC STORM (48-63KT)

VSCS: VERY SEVERE CYCLONIC STORM (64-89 KT)

ESCS: EXTREMELY SEVERE CYCLONIC STORM (90-119 KT)

SuCS: SUPER CYCLONIC STORM (\geq 120 KT)



LESS THAN 34 KT



34-47 KT



\geq 48 KT



OBSERVED TRACK



FORECAST TRACK



CONE OF UNCERTAINTY